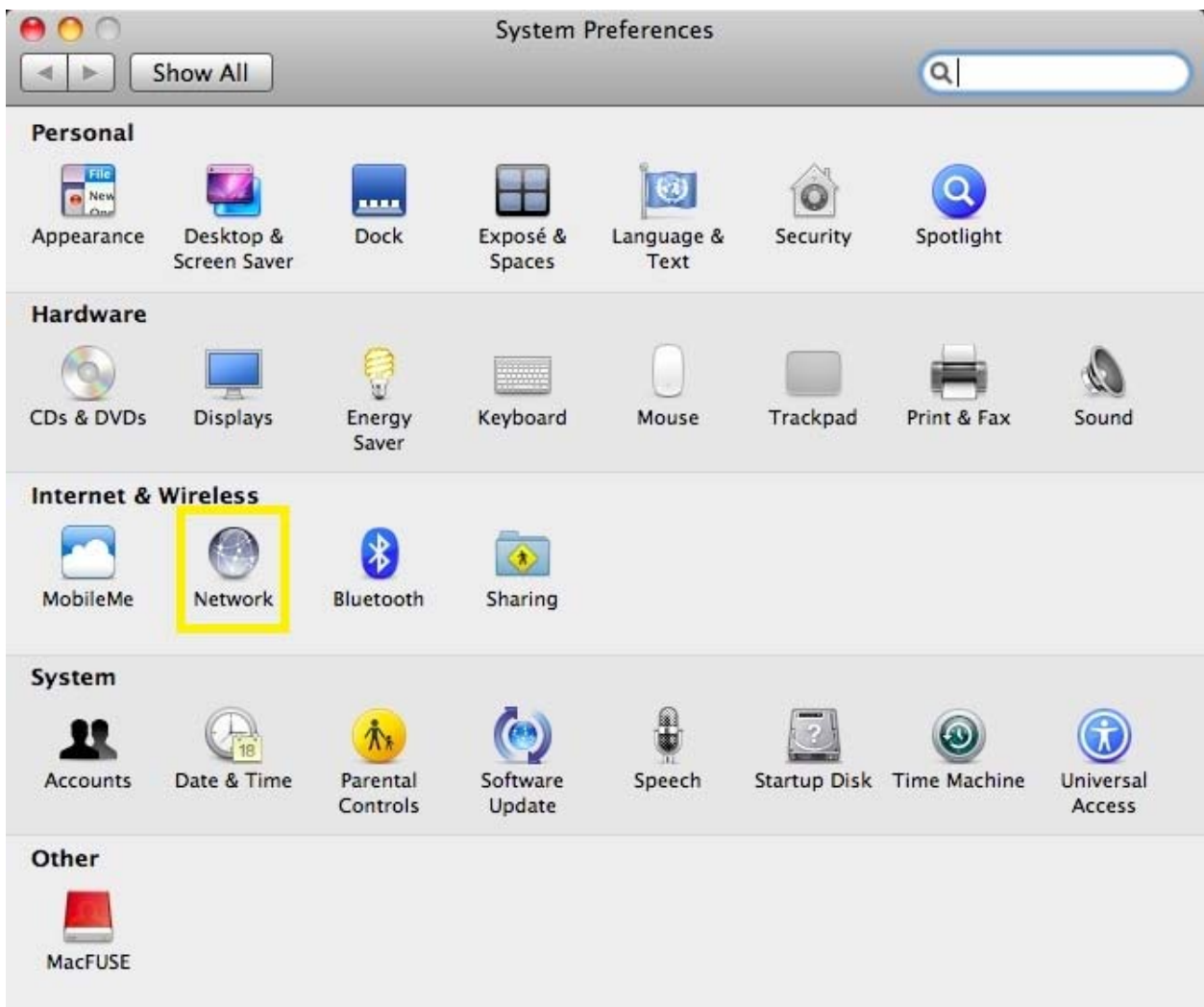


HCC Wireless Setup Instructions for Mac OS X Snow Leopard

1. Click the “System Preferences” icon on the dock.



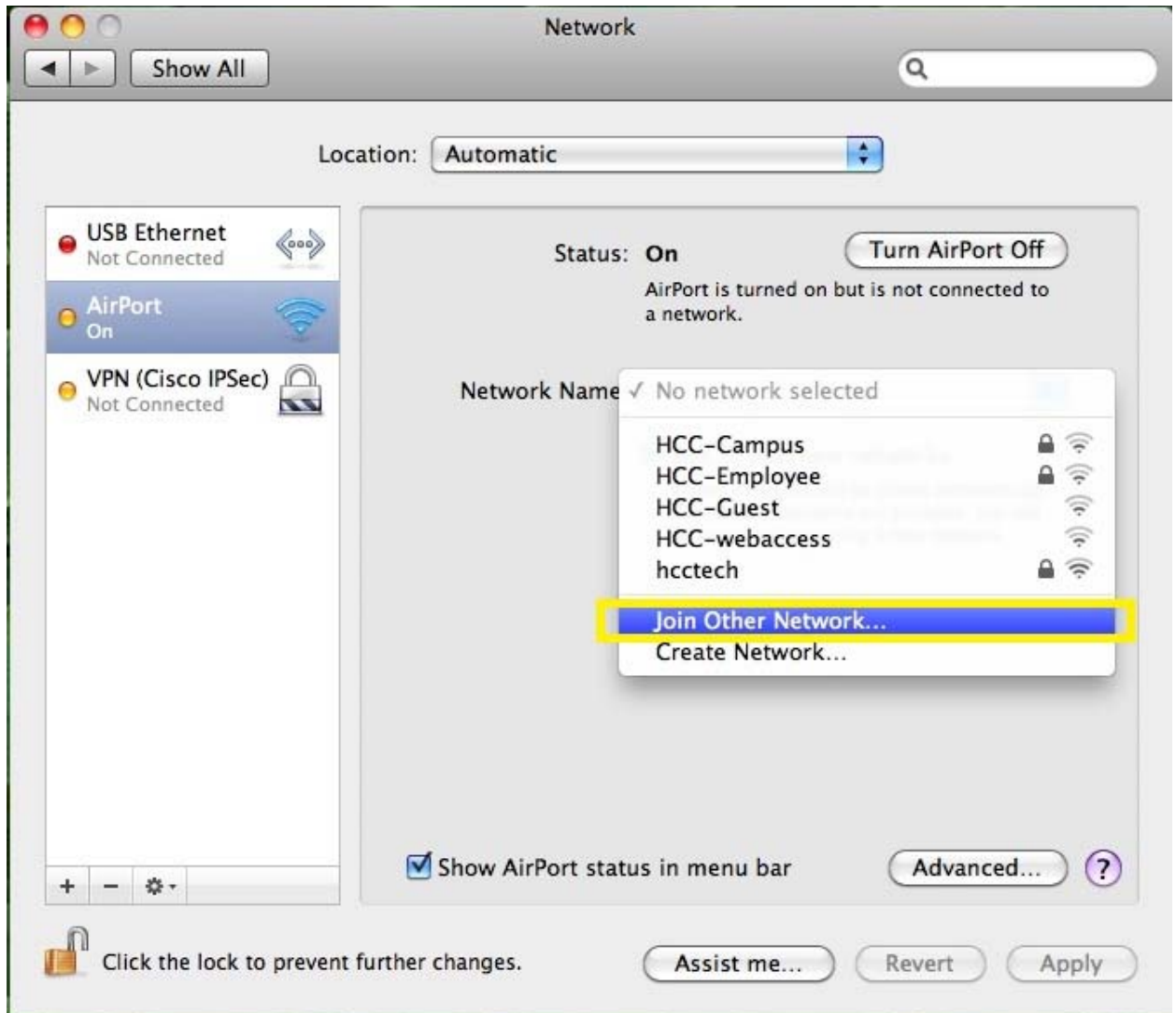
2. Click the “Network” icon under the “Internet & Wireless” section.



3. If the Airport Status is off, turn it on by clicking the “Turn Airport On” button.



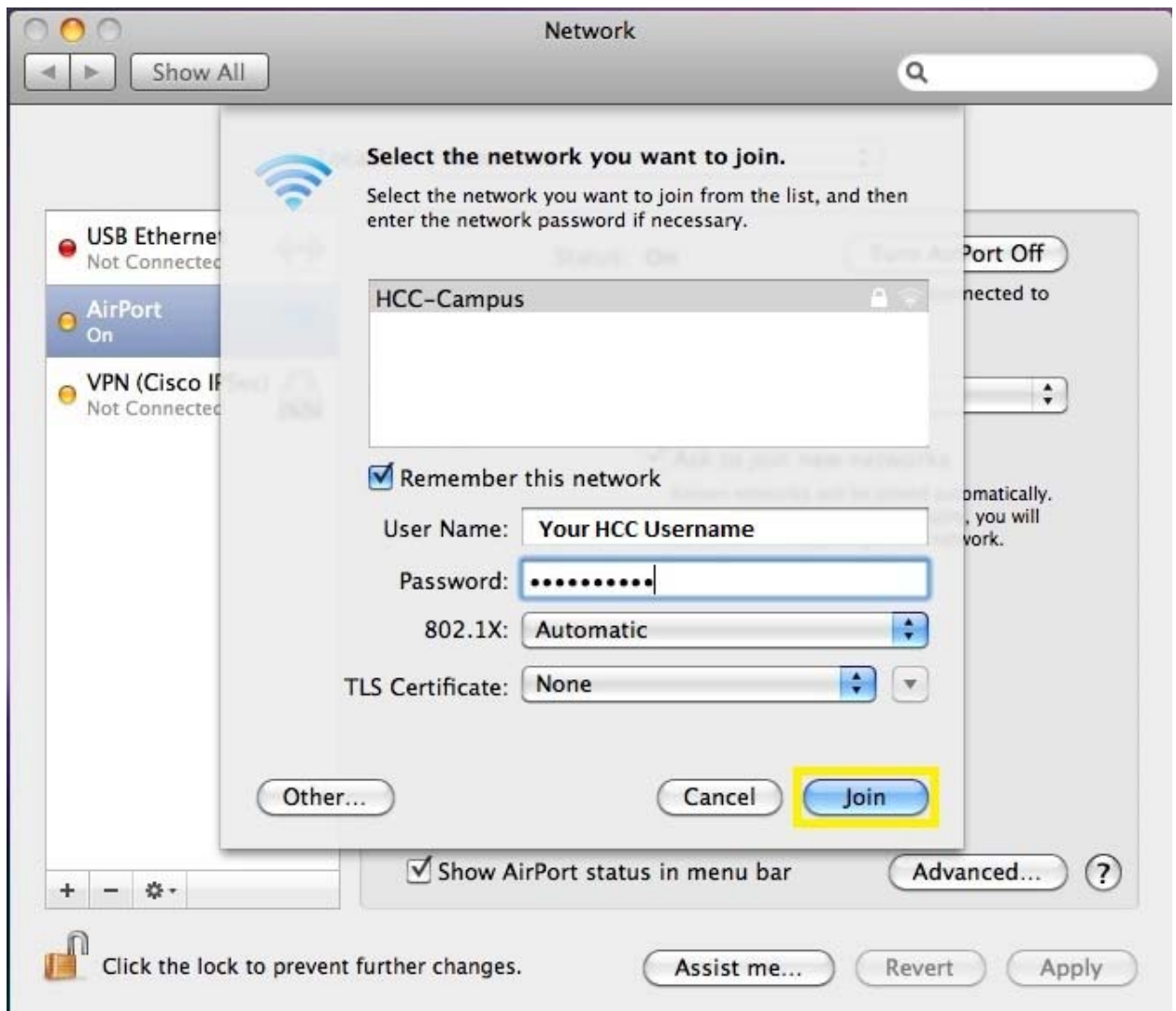
4. Click the “**Network Name**” dropdown and click “**Join Other Network...**”.



5. Click the “Show Networks” button.



6. Select **HCC-Campus** by clicking it. Then check the **“Remember this network”** checkbox. Enter your assigned HCC Username and password in the provided fields and then click the **“Join”** button.



7. In the Verify Certificate box click the **“Continue”** button.



8. You will then be prompted for your Mac user name and password. Enter your credentials and click the “OK” button



9. Now click the “Apply” button to save your changes.

