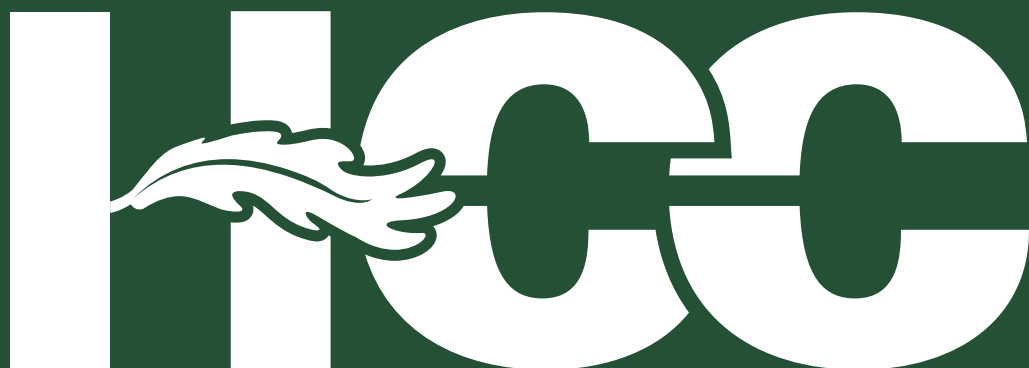


NORTH CAROLINA
CAREER
& COLLEGE
PROMISE
2021-2022 CATALOG



HAYWOOD COMMUNITY COLLEGE



CAREER TECHNICAL EDUCATION PATHWAYS

COLLEGE TRANSFER PATHWAYS

ASSOCIATE IN **ARTS** pg 3

ASSOCIATE IN **ARTS** pg 4
TEACHER PREPARATION

ASSOCIATE IN **SCIENCE** pg 5

ASSOCIATE IN **SCIENCE** pg 6
TEACHER PREPARATION

ASSOCIATE DEGREE pg 7
NURSING

ASSOCIATE IN pg 8
ENGINEERING

ACCOUNTING & FINANCE pg 10

AUTOMOTIVE
SYSTEMS TECHNOLOGY pg 10

BUSINESS ADMINISTRATION pg 10

COLLISION REPAIR AND
REFINISHING TECHNOLOGY pg 10

COMPUTER INTEGRATED
MACHINING pg 10

CRIMINAL JUSTICE
TECHNOLOGY pg 11

EARLY CHILDHOOD
PRESCHOOL pg 11

ELECTRICAL SYSTEMS
TECHNOLOGY pg 11

ELECTRONICS ENGINEERING
TECHNOLOGY pg 11

FOREST MANAGEMENT
TECHNOLOGY pg 12

INFORMATION TECHNOLOGY pg 12

MEDICAL OFFICE
ADMINISTRATION pg 12

WELDING TECHNOLOGY pg 12

CCP WORKFORCE CONTINUING
EDUCATION PATHWAYS pg 12

ENROLLMENT SUCCESS

2018-2019 CCP Data:

Average GPA= 3.236

% of courses passed= 93.8% total

% of courses passed –traditional 96.1%

% of courses passed Web assisted- 95.8%

% of courses passed Online- 88%

The Career and College Promise program allows eligible high school students to earn college credit, tuition-free. Students who meet academic eligibility requirements are able to enroll in college classes through career technical education or college transfer pathways. Courses in these dual credit programs are taught on the high school campuses, at Haywood Community College (HCC), and online. Career and College Promise students have the opportunity to meet two graduation requirements, both in high school and college, simultaneously, allowing them to save time and money.

COLLEGE TRANSFER PATHWAYS

The College Transfer Pathways are designed for high school juniors and seniors who wish to take courses toward a college transfer degree and/or a baccalaureate degree. It also gives students the opportunity to experience the rigor and independence of college life.

Upon completion of a College Transfer Pathway, the student may complete his/her college transfer degrees at Haywood Community College. Or, the student may apply for admission and receive credit for general education courses at all North Carolina public universities or a participating independent college or university.

ELIGIBILITY REQUIREMENTS

High school junior or senior eligibility requirements:

- a. Have unweighted, cumulative GPA of 2.8 on high school courses, or;
- b. Demonstrate college readiness on an assessment or placement test (see table below)

High school freshmen or sophomore eligibility requirements:

- a. Be identified as gifted by:
 - i. Local AIG plan in English/reading and math; or
 - ii. An aptitude and achievement test as evidenced by a score in the range between the 92nd percentile and the 99th percentile on the aptitude and the achievement test included in the Mental Measurements Yearbook published by the Buros Institute of Mental Measurements; and
- b. Demonstrate college readiness in English, reading and mathematics on an approved assessment; (See table below); and
- c. Receive recommendation verifying the student has

- maturity to enroll from high school principal or equivalent administrator; and receive recommendation of AIG Coordinator (if one is employed by the district); and
- d. Receive approval of college president or the college’s chief student development administrator or the college’s chief academic officer; and
- e. Receive written consent of the student’s parent/guardian; and
- f. Receive academic advising prior to enrollment in the program.

*With approval of the high school principal or his/her designee and the college’s chief academic officer or chief student development administrator, a student may concurrently enroll in:

- a. One College Transfer Pathway and one Career Technical Education Pathway or
- b. One College Transfer Pathway and one Workforce Continuing Education Pathway

College Readiness Approved Benchmarks on Approved Assessments

Test	PSAT and PSAT/NMSQT (2015 and Future)	SAT (March 2016 and Future)	Pre-ACT and ACT	NC DAP (NCCCS CUT SCORE)	RISE Placement Test
English	26 or a composite score of 460 for Evidenced-Based Reading and Writing	480 composite score for Evidenced-Based Reading and Writing	18	Composite score of 151 or higher	70 or higher on Tier 1 & Tier 2 (See RISE Placement Guide)
Reading	26 or a composite score of 460 for Evidenced-Based Reading and Writing		22		
Mathematics	24.5 or 510	530	22	7 on each assessment for DMA 010 thru 060	70 or higher on Tier 1 & Tier 2 & Tier 3 (See RISE Placement Guide)

IMPORTANT INFORMATION FOR ALL PROGRAMS:

- CCP course grades and credit will become part of student's college transcript.
- CCP students pay no tuition, but they are responsible for required course texts and materials.
- CCP students are responsible for providing their own transportation to HCC.
- CCP students are HCC students and must follow all HCC student policies.

Career & College Promise College Transfer Pathway Leading to the Associate in Arts (P1012C)

The CCP College Transfer Pathway Leading to the Associate in Arts is designed for high school juniors and seniors who wish to begin study toward the Associate in Arts degree and a baccalaureate degree in a non-STEM major. The general education requirement includes study in courses selected from the Universal General Education Transfer Component (UGETC) of the Comprehensive Articulation Agreement.

English Composition: 6 semester hours | Credit Hours

ENG 111	Writing & Inquiry	3
ENG 112*	Writing and Research in the disciplines	3

Math: 3-4 semester hours

MAT 143	Quantitative Literacy	3
MAT 152	Statistical Methods I	4
MAT 171	Precalculus Algebra	4

Humanities/Fine Arts/Communication: 9 semester hours from at least two different disciplines

ART 111	Art Appreciation	3
ART 114	Art History Survey I	3
ART 115	Art History Survey II	3
COM 120	Intro to Interpersonal Comm	3
OR		
COM 231	Public Speaking	3
ENG 231*	American Literature I	3
ENG 232*	American Literature II	3
ENG 241*	British Literature I	3
ENG 242*	British Literature II	3
MUS 110	Music Appreciation	3
MUS 112	Introduction to Jazz	3
PHI 215*	Philosophical Issues	3
PHI 240*	Introduction to Ethics	3

Natural Sciences: 4 semester hours

BIO 111	General Biology I	4
CHM 151	General Chemistry I	4
GEL 111	Geology	4
PHY 110	Conceptual Physics and	3
PHY 110A	Conceptual Physics Lab	1

Academic Transition: 1 semester hour

ACA 122	College Transfer Success	1
---------	--------------------------	---

Total Semester Hours Credit in Pathway: 32-41

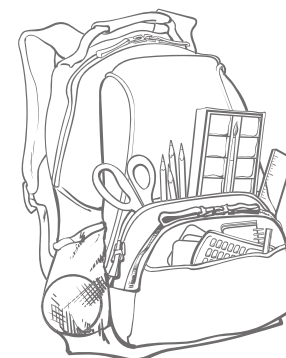
Foreign Language: 6 semester hours (Optional)

SPA 111	Elementary Spanish I	3
SPA 112*	Elementary Spanish II	3

Social/Behavioral Sciences: 9 semester hours from at least two different disciplines

ECO 251	Principles of Microeconomics	3
ECO 252	Principles of Macroeconomics	3
HIS 111	World Civilizations I	3
HIS 112	World Civilizations II	3
HIS 131	American History I	3
HIS 132	American History II	3
POL 120	American Government	3
PSY 150	General Psychology	3
SOC 210	Introduction to Sociology	3

High school students in the CCP College Transfer Pathway Leading to the Associate in Arts must complete the entire pathway before taking additional courses in the Associate in Arts degree, with the exception of mathematics courses beyond MAT 171 in the Associate in Arts.



Career & College Promise College Transfer Pathway Leading to the Associate in Arts in Teacher Preparation (P1012T)

The CCP College Transfer Pathway Leading to the Associate in Arts in Teacher Preparation is designed for high school students who wish to begin study toward the Associate in Arts in Teacher Preparation degree and a baccalaureate degree in teaching in a non-STEM major.

GENERAL EDUCATION: (34 semester hours) The general education requirement includes study in courses selected from the Universal General Education Transfer Component (UGETC) component of the Comprehensive Articulation Agreement.

English Composition: 6 semester hours | Credit Hours

ENG 111	Writing & Inquiry	3
ENG 112*	Writing and Research in the disciplines	3

Humanities/Fine Arts/Communication: 9 semester hours from at least two different disciplines

ART 111	Art Appreciation	3
ART 114	Art History Survey I	3
ART 115	Art History Survey II	3
COM 120	Intro to Interpersonal Comm	3
OR		
COM 231	Public Speaking	3
ENG 231*	American Literature I	3
ENG 232*	American Literature II	3
ENG 241*	British Literature I	3
ENG 242*	British Literature II	3
MUS 110	Music Appreciation	3
MUS 112	Introduction to Jazz	3
PHI 215*	Philosophical Issues	3
PHI 240*	Introduction to Ethics	3

Social/Behavioral Sciences: 9 semester hours from at least two different disciplines

ECO 251	Principles of Microeconomics	3
ECO 252	Principles of Macroeconomics	3
HIS 111	World Civilizations I	3
HIS 112	World Civilizations II	3
HIS 131	American History I	3
HIS 132	American History II	3
POL 120	American Government	3
PSY 150	General Psychology	3
SOC 210	Introduction to Sociology	3

Math: 3-4 semester hours, select one of the following

MAT 143	Quantitative Literacy	3
MAT 152	Statistical Methods I	4
MAT 171	Precalculus Algebra	4

Natural Sciences: 4 semester hours

BIO 111	General Biology I	4
CHM 151	General Chemistry I	4
GEL 111	Geology	4
PHY 110	Conceptual Physics	3
and		
PHY 110A	Conceptual Physics Lab	1

Other Required General Education

SOC 225	Social Diversity	3
---------	------------------	---

Total General Education Hours Required: 31-32

Other Required Hours: 8 Semester Hours

Education: 7 credit hours

EDU 187	Teaching and Learning for All**	4
EDU 216	Foundations of Education	4

** Students who have completed Teacher Cadet or Teaching as a Profession courses in high school with a B or better may substitute that course for EDU 187 Teaching and Learning for All.

Academic Transition: 1 semester hour

ACA 122	College Transfer Success	1
---------	--------------------------	---

Total Semester Hours Credit: 39-48**

****Optional General Education Hours: 0-8**

Foreign Language: 6 semester hours (Optional)

SPA 111	Elementary Spanish I	3
SPA 112*	Elementary Spanish II	3

High school students in the CCP College Transfer Pathway Leading to the Associate in Arts in Teacher Preparation must complete the entire pathway before taking additional courses in the Associate in Arts degree in Teacher Preparation with the exception of mathematics courses beyond MAT 171 in the Associate Arts.

Career & College Promise College Transfer Pathway Leading to the Associate in Science (P1042C)

The CCP College Transfer Pathway Leading to the Associate in Science is designed for high school juniors and seniors who wish to begin study toward the Associate in Science degree and a baccalaureate degree in a STEM or technical major. The general education requirement includes study in courses selected from the Universal General Education Transfer Component (UGETC) of the Comprehensive Articulation Agreement.

English Composition: 6 semester hours | Credit Hours

ENG 111	Writing & Inquiry	3
ENG 112*	Writing and Research in the disciplines	3

Math: 8 semester hours

MAT 171	Precalculus Algebra	4
MAT 172*	Precalculus Trigonometry	4
MAT 271*	Calculus I	4
MAT 272*	Calculus II	4

Humanities/Fine Arts/Communication: 6 semester hours from at least two different disciplines

ART 111	Art Appreciation	3
ART 114	Art History Survey I	3
ART 115	Art History Survey II	3
COM 120	Intro to Interpersonal Comm	3
COM 231	Public Speaking	3
ENG 231*	American Literature I	3
ENG 232*	American Literature II	3
ENG 241*	British Literature I	3
ENG 242*	British Literature II	3
MUS 110	Music Appreciation	3
MUS 112	Introduction to Jazz	3
PHI 215*	Philosophical Issues	3
PHI 240*	Introduction to Ethics	3

Natural Sciences: 8 semester hours

(select one sequence)

BIO 111	General Biology I	4
BIO 112*	General Biology II	4
OR		
CHM 151	General Chemistry I	4
CHM 152*	General Chemistry II	4
OR		
PHY 151	College Physics I	4
PHY 152*	College Physics II	4
OR		
PHY 251*	General Physics I	4
PHY 252*	General Physics II	4

Social/Behavioral Sciences: 6 semester hours from at least two different disciplines

ECO 251	Principles of Microeconomics	3
ECO 252	Principles of Macroeconomics	3
HIS 111	World Civilizations I	3
HIS 112	World Civilizations II	3
HIS 131	American History I	3
HIS 132	American History II	3
POL 120	American Government	3
PSY 150	General Psychology	3
SOC 210	Introduction to Sociology	3

Academic Transition: 1 semester hour

ACA 122	College Transfer Success	1
---------	--------------------------	---

Total Semester Hours Credit in Pathway: 35-43

Foreign Language: 6 semester hours (Optional)

SPA 111	Elementary Spanish I	3
SPA 112*	Elementary Spanish II	3

High school students in the CCP College Transfer Pathway Leading to the Associate in Science must complete the entire pathway before taking additional courses in the Associate in Science degree, with the exception of mathematics courses beyond MAT 271.

* = indicates courses with pre-requisite

Career & College Promise College Transfer Pathway Leading to the Associate in Science Teacher Preparation (P1042T)

The CCP College Transfer Pathway Leading to the Associate in Science in Teacher Preparation is designed for high school students who wish to begin study toward the Associate in Science in Teacher Preparation degree and a baccalaureate degree in teaching in a STEM or technical major.

GENERAL EDUCATION: (34 semester hours) The general education requirement includes study in courses selected from the Universal General Education Transfer Component (UGETC).

English Composition: 6 semester hours | Credit Hours

ENG 111	Writing & Inquiry	3
ENG 112*	Writing and Research in the disciplines	3

Humanities/Fine Arts/Communication: 6 semester hours from at least two different disciplines

ART 111	Art Appreciation	3
ART 114	Art History Survey I	3
ART 115	Art History Survey II	3
COM 120	Intro to Interpersonal Comm	3
OR		
COM 231	Public Speaking	3
DRA 111	Theatre Appreciation	3
ENG 231*	American Literature I	3
ENG 232*	American Literature II	3
ENG 241*	British Literature I	3
ENG 242*	British Literature II	3
MUS 110	Music Appreciation	3
MUS 112	Introduction to Jazz	3
PHI 215*	Philosophical Issues	3
PHI 240*	Introduction to Ethics	3

Social/Behavioral Sciences: 6 semester hours from at least two different disciplines

ECO 251	Principles of Microeconomics	3
ECO 252	Principles of Macroeconomics	3
HIS 111	World Civilizations I	3
HIS 112	World Civilizations II	3
HIS 131	American History I	3
HIS 132	American History II	3
POL 120	American Government	3
PSY 150	General Psychology	3
SOC 210	Introduction to Sociology	3

* = indicates courses with pre-requisite

Math: 8 semester hours required, select two courses

MAT 171	Precalculus Algebra	4
MAT 172	Precalculus Trigonometry	4
MAT 263	Brief Calculus	4
MAT 271	Calculus I	4
MAT 272	Calculus II	4

Natural Sciences: 8 semester hours (select one sequence)

BIO 111	General Biology I	4
BIO 112*	General Biology II	4
OR		
CHM 151	General Chemistry I	4
CHM 152*	General Chemistry II	4
OR		
PHY 151	College Physics I	4
PHY 152*	College Physics II	4
OR		
PHY 251*	General Physics I	4
PHY 252*	General Physics II	4

Other Required General Education: 3 credit hours

SOC 225	Social Diversity	3
---------	------------------	---

Total General Education Hours Required: 34

Other Required Hours: 8 semester hours

EDU 187	Teaching and Learn for All**	3
EDU 216	Foundations of Education	3

Academic Transition: 1 credit hour

ACA 122	College Transfer Success	1
---------	--------------------------	---

Total Semester Credit Hours in Pathway: 42-50*

Foreign Language: 6 semester hours (Optional)

SPA 111	Elementary Spanish I	3
SPA 112*	Elementary Spanish II	3

High school students in the CCP College Transfer Pathway Leading to the Associate in Science in Teacher Preparation must complete the entire pathway before taking additional courses in the Associate in Science in Teacher Preparation degree, with the exception of mathematics courses beyond MAT 271.

Career & College Promise Associate Degree Nursing (ADN) Pathway (P1032C)

The Career and College Promise (CCP) ADN Pathway is designed for high school juniors and seniors who wish to begin their educational studies toward the Associate in Nursing degree and a Baccalaureate degree in Nursing. The Pathway is based on Block 1 of the Uniform Articulation Agreement between the University of North Carolina's Registered Nurse to Bachelor of Science in Nursing programs and the North Carolina Community College Associate Degree Nursing Programs which was approved by the State Board of Community Colleges and the UNC Board of Governors in February 2015.

GENERAL EDUCATION: (23 semester hours)

These courses are contained in Block 1 of the Five Block Degree Plan located within the RN to BSN Articulation Agreement.

English Composition: 6 semester hours

ENG 111	Writing & Inquiry (required)	3
ENG 112*	Writing/Research	3

Humanities/Fine Arts: 3 semester hours

ART 111	Art Appreciation	3
ART 114	Art History Survey I	3
ART 115	Art History Survey II	3
MUS 110	Music Appreciation	3
MUS 112	Introduction to Jazz	3
PHI 215*	Philosophical Issues	3
PHI 240*	Introduction to Ethics	3
HUM 115	Critical Thinking	3

* = indicates courses with pre-requisite

Social/Behavioral Sciences: 6 semester hours (required)

PSY 150	General Psychology	3
PSY 241*	Developmental Psychology	3

Natural Sciences: 8 semester hours

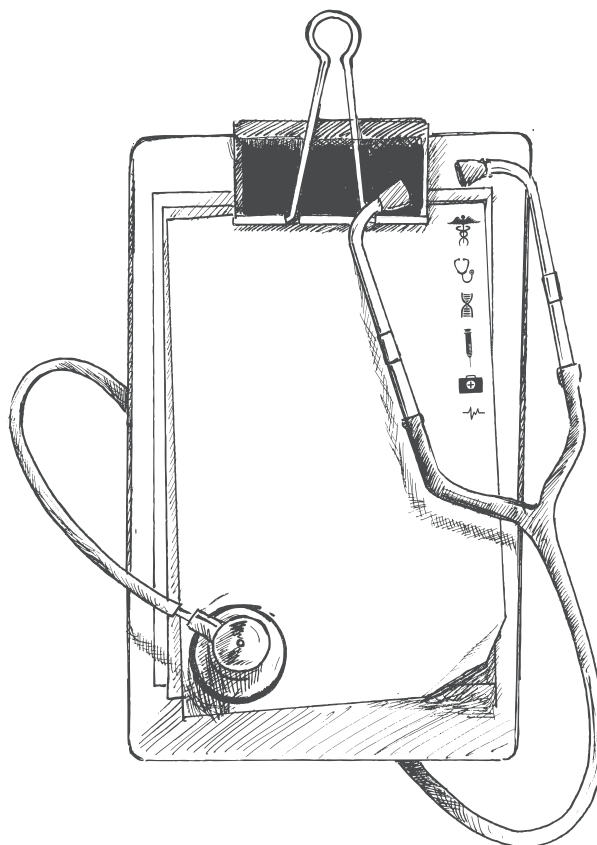
BIO 168	Anatomy and Physiology I	4
BIO 169*	Anatomy and Physiology II	4

Academic Transition: 1 semester hour (required)

ACA 122	College Transfer Success	1
---------	--------------------------	---

Total Semester Hours Credit in Pathway: 24

High school students in the CCP Associate Degree Nursing Pathway to the Associate in General Education Nursing (A1030N) program must complete the entire pathway before taking additional courses in the Associate in General Education Nursing (A1030N) program.



Career and College Promise College Transfer Pathway Leading to the Associate in Engineering (P1052C)

The College Transfer Pathway (CCP) leading to the Associate in Engineering is designed for high school juniors and seniors who wish to begin study toward the Associate in Engineering degree and a baccalaureate degree in a STEM or technical major.

GENERAL EDUCATION: (28 semester hours)

The general education requirement includes study in courses selected from the Universal General Education Transfer Component (UGETC).

English Composition: 6 semester hours (required)

ENG 111	Writing & Inquiry	3
*ENG 112	Writing/Research in the Disciplines	3

Humanities/Fine Arts and Communications: 3 semester hours

ART 111	Art Appreciation	3
ART 114	Art History Survey I	3
ART 115	Art History Survey II	3
COM 231	Public Speaking	3
ENG 231*	American Literature I	3
ENG 232*	American Literature II	3
ENG 241*	British Literature I	3
ENG 242 *	British Literature II	3
MUS 110	Music Appreciation	3
MUS 112	Introduction to Jazz	3
PHI 215*	Philosophical Issues	3
PHI 240*	Introduction to Ethics	3

Social/Behavioral Sciences: 3 semester hours (required)

ECO 251	Principles of Microeconomics	3
---------	------------------------------	---

Mathematics: 8 semester hours (required)

Calculus I is the lowest level math course that will be accepted by the engineering programs for transfer as a math credit. Students who are not calculus-ready will need to take additional math courses.*

MAT 271*	Calculus I	4
MAT 272*	Calculus II	4

Natural Sciences: 8 semester hours

CHM 151	General Chemistry I	4
PHY 251*	General Physics I	4
PHY 252*	General Physics II	4

Other Required Courses: 6 semester hours

Academic Transition: 1 semester hour (required)

ACA 122	College Transfer Success	1
---------	--------------------------	---

Engineering: 5 semester hours (required)

EGR 150	Introduction to Engineering	2
DFT 170	Engineering Graphics	3

*Prerequisite General Education: 0-8 semester hours

MAT 171	Pre-Calculus Algebra	
---------	----------------------	--

Students who do not place directly into MAT 271 must complete MAT 171 and MAT 172 prior to enrolling in MAT 271 Calculus I.

Foreign Language: 6 semester hours (Optional)

SPA 111	Elementary Spanish I	3
SPA 112*	Elementary Spanish II	3

High school students in the CCP College Transfer Pathway Leading to the Associate in Engineering must complete the entire pathway before taking additional courses in the Associate in Engineering degree with the following exception: Students may take additional math courses beyond MAT 272 that are required for the Associate in Engineering degree.

Total Semester Hours Credit in Pathway: 34-50

* = indicates courses with pre-requisite

CAREER TECHNICAL EDUCATION PATHWAYS

The Career and College Promise Career Technical Education (CTE) Pathway leads to a certificate or diploma aligned with a high school Career Cluster. Upon completion of a CTE Pathway, students will have earned substan-

ELIGIBILITY REQUIREMENTS

To be eligible for enrollment, a high school student must:

- (A) Be a high school junior or senior; and
- (B) Have an unweighted GPA of 2.8 on high school courses; or
- (C) Demonstrate college readiness in English, reading and mathematics by meeting benchmarks on diagnostic assessment tests which have been approved by the State Board of Community Colleges.
- (D) Juniors or seniors who do not meet the eligibility requirements in 1D SBCCC 6 400.11(n)(1)(A) – (C) shall have the recommendation of the high school principal or the high school principal's designee and the college's chief student development administrator or the college's chief academic officer. A recommendation is only allowed for entry into Career and College Promise Career and Technical Education Pathway that does not include Universal General Education Transfer Component (UGETC) courses.

With approval of the high school principal or his/her designee and the college's chief academic officer or chief student development administrator, a student may concurrently enroll in:

- (A) One College Transfer Pathway and one curriculum Career and Technical Education Pathway or
- (B) Two curriculum Career and Technical Education Pathways or
- (C) One curriculum Career and Technical Education Pathway and one Workforce Continuing Education Pathway

OR

(1) Colleges may enroll eligible high school Freshmen and Sophomores only in industrial technologies (program code 50xxx), engineering technologies (program code 40xxx), agriculture and natural resources (program code 15xxx), and transportation (program code 60xxx), construction (program code 35xxx), and business technologies (program code 25xxx) certificate and diploma programs.

(2) Freshmen and Sophomores may not enroll in Career and Technical Education Pathways that include Universal General Education Transfer Component (UGETC) courses.

(3) To be eligible for enrollment, a high school student

must be a high school Freshman or Sophomore. A Freshman or Sophomore must:

- (A) Have passed Math I with a grade of "C" or better;
- (B) Test college ready in mathematics as determined by the assessment given by the North Carolina Department of Public Instruction;
- (C) Test college ready in English and reading as determined by the assessment given by the North Carolina Department of Public Instruction;
- (D) Have received information outlining program requirements for completion of the certificate or diploma; and
- (E) Have the recommendation of the high school principal or the principal's designee and the college's chief student development administrator or the college's chief academic officer; or
- (F) Demonstrate college readiness in English, reading and mathematics by meeting benchmarks on diagnostic assessment tests which have been approved by the State Board of Community Colleges and have the recommendation of the high school principal or the high school principal's designee and the college's chief student development administrator or the college's chief academic officer.

With approval of the high school principal or his/her designee and the college's chief academic officer or chief student development administrator, a student may concurrently enroll in two Career and Technical Education Pathways available to 9th and 10th graders.



Accounting & Finance -Income Tax Preparation CCP (C25800CP)

Fall Semester 1		Credit Hours
ACC 120	Principles of Financial Accounting	4
ACC 129	Individual Income Taxes	3
CIS 110	Introduction to Computers	3
Spring Semester 1		Credit Hours
ACC 130*	Business Income Taxes	3
CTS 130	Spreadsheet	3
TOTAL Credit Hours		16

Certificate in Automotive Systems Technology CCP (C60160CP)

Fall Semester 1		Credit Hours
TRN 110	Introduction to Transport Technology	2
TRN 120	Basic Transportation Electricity	5
Spring Semester 1		Credit Hours
AUT 151	Brake Systems	3
AUT 181	Engine Performance I	3
TOTAL Credit Hours		13

Certificate in Automotive Systems Technology - Intermediate CCP (C60160IM)

Fall Semester 1		Credit Hours
TRN 120	Basic Transportation Electricity	5
TRN 140	Transportation Climate Control	2
TRN 140A	Transportation Climate Control Lab	2
TRN 180	Basic Welding for Transportation	3
Spring Semester 1		Credit Hours
AUT 181	Engine Performance I	3
AUT 281	Advanced Engine Performance	3
TOTAL Credit Hours		18

* = indicates courses with pre-requisite

Certificate in Business Administration - Business Basics CCP (C25120CB)

Fall Semester 1		Credit Hours
BUS 110	Introduction to Business	3
ACC 120	Principles of Financial Accounting	4
Spring Semester 2		Credit Hours
BUS 137	Principles of Management	3
MKT 120	Principles of Marketing	3
TOTAL Credit Hours		13

Certificate in Business Administration - Marketing CCP (C25120CM)

Fall Semester 1		Credit Hours
MKT 223	Customer Service	3
ETR 220	Innovation and Creativity	3
Spring Semester 2		Credit Hours
MKT 120	Principles of Marketing	3
MKT 232	Social Media Marketing	3
TOTAL Credit Hours		12

Certificate in Collision Repair and Refinishing - CCP (C60130CP)

Fall Semester 1		Credit Hours
AUB 111	Painting and Refinishing I	4
WLD 110	Cutting Processes	2
Spring Semester 1		Credit Hours
AUB 121	Non-Structural Damage I	3
AUB 131	Structural Damage I	4
TOTAL Credit Hours		13

Certificate in Computer - Integrated Machining Technology CCP (C50210CP)

Fall Semester 1		Credit Hours
MAC 111	Machining Technology I	6
Spring Semester 1		Credit Hours
MAC 112	Machining Technology II	6
TOTAL Credit Hours		12

Certificate in Criminal Justice

Technology I & II CCP (C55180II)

Fall Semester 1		Credit Hours
CJC 111	Introduction to Criminal Justice	3
CJC 112	Criminology	3
Spring Semester 1		Credit Hours
CJC 113	Juvenile Justice	3
CJC 131	Criminal Law	3
TOTAL Credit Hours		12

Certificate in Criminal Justice

Technology III & IV CCP (C55180IV)

Fall Semester 1		Credit Hours
CJC 111	Introduction to Criminal Justice	3
CJC 121	Law Enforcement Operations	3
CJC 141	Corrections	3
Spring Semester 1		Credit Hours
CJC 113	Juvenile Justice	3
CJC 212	Ethics and Community Relations	3
CJC 231	Constitutional Law	3
TOTAL Credit Hours		18

Certificate in Early Childhood Preschool CCP (C55860CP)

Fall Semester 1		Credit Hours
EDU 119	Introduction to Early Childhood Education	4
EDU 131	Child, Family, and Community	3
EDU 146	Child Guidance	3
Spring Semester 1		Credit Hours
EDU 145	Child Development II	3
EDU 153	Health, Safety, and Nutrition	3
TOTAL Credit Hours		16

Certificate in Electrical Systems Technology CCP (C35130CP)

Fall Semester 1		Credit Hours
ELC 113	Residential Wiring	4
Spring Semester 1		Credit Hours
ELC 114	Commercial Wiring	4
Fall Semester 2		Credit Hours
ELC 131	Circuit Analysis	4
ELC 131A	Circuit Analysis Lab	1
TOTAL Credit Hours		13

Certificate in Electronics Engineering

Technology CCP (C40200CP)

Fall Semester 1		Credit Hours
ELC 131	Circuit Analysis	4
ELC 131A	Circuit Analysis Lab	1
Spring Semester 1		Credit Hours
ELN 131	Analog Electronics I	4
Fall Semester 2		Credit Hours
ELN 133	Digital Electronics	4
TOTAL Credit Hours		13



Certificate in Forest Management Technology

CCP (C15200CP)

Fall Semester 1 Credit Hours

FOR 121	Dendrology	4
FOR 171	Introduction to Forest Resources	3
FOR 215	Introduction to GIS/GPS	3
FWL 142	Wildlife Management	3

Spring Semester 1 Credit Hours

FOR 131	Forest Measurements	3
TOTAL Credit Hours		16

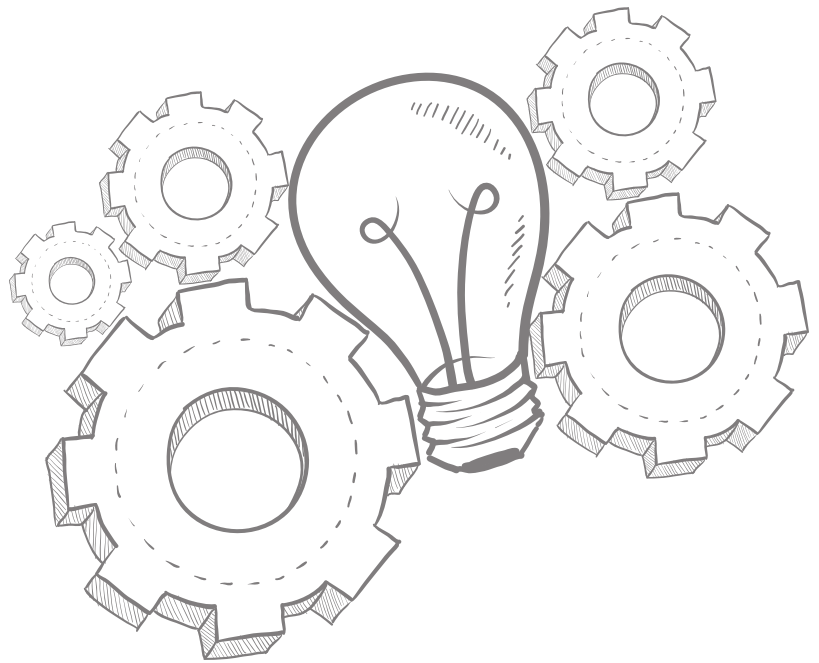
Certificate in Information Technology - Cyber Security CCP (C25590CP)

Fall Semester 1 Credit Hours

CCT 110	Intro to Cyber Security	3
SEC 110	Security Concepts	3

Spring Semester 1 Credit Hours

CTI 120	Network and Foundation	3
NOS 120	Linux/UNIX Single User	3
SEC 160	Security Administration	3
TOTAL Credit Hours		15



* = indicates courses with pre-requisite



Certificate in Medical Office Administration CCP (C25310CM)

Fall Semester 1 Credit Hours

MED 121	Medical Terminology I	3
OST 149	Medical Legal Issues	3

Spring Semester 1 Credit Hours

MED 122 *	Medical Terminology II	3
OST 148	Medical Coding, Billing & Insurance	3
TOTAL Credit Hours		12

Certificate Welding Technology - Basic CCP (C50420B)

Fall Semester 1 Credit Hours

BPR 111	Print Reading	2
WLD 110	Cutting Processes	2
WLD 115	SMAW (Stick) Plate	5
WLD 121	GMAW (MIG) FCAW/Plate	4
TOTAL Credit Hours		13

CCP WORKFORCE CONTINUING EDUCATION PATHWAYS (Pending Approval)

ELIGIBILITY REQUIREMENTS:

(A) Be a high school junior or senior, and

(1) Have an unweighted, cumulative GPA of 2.8 or higher on high school courses; or

(2) Demonstrate college readiness in English, reading and mathematics on an assessment (See Attachment A for college readiness scores.)

OR

(B) Be a high school junior or senior, and

(1) Have the recommendation of the high school principal or his/her designee and have the high school principal or his/her designee's rationale for recommendation in place of GPA requirement; and

(2) Have the recommendation of the college's Chief Academic Officer or Chief Student Development Administrator

*With approval a student may concurrently enroll in:

(A) Two WCE Pathways or

(B) One College Transfer Pathway and one WCE Pathway or

(C) One curriculum CTE Pathway and one WCE Pathway

Programs offered for Central Haywood, Pisgah, and Tuscola High School students only:

• PHM 3250 PHARMACY TECHNICIAN: Fall 2021 4TH Period or Spring Online (ANY PERIOD)

A career as a pharmacy technician prepares students to assist the pharmacist in dispensing medications and advancing patient safety.

Upon successful completion of the program, students are eligible to take the Pharmacy Technician Certification Examination® (PTCE®) which prepares students to become a Certified Pharmacy Technician (CPhT).

• EMS 4200 EMERGENCY MEDICAL TECHNICIAN: Spring 2022 4TH Period

EMTs provide out-of-hospital emergency care and transportation for sick or injured patients who access the EMS system. EMTs have the basic knowledge and skills necessary to stabilize and safely transport patients ranging from nonemergency and routine medical transports to life-threatening emergencies.

PREREQUISITES:

1. 17 years of age on or before the official end date of the course.

2. Possession of a high school diploma, high school equivalency or successful completion of an exam assessing basic reading comprehension skills at a minimum at the eleventh-grade level.

• FIP 3031 FIRE FIGHTER TRAINING BLOCK 1: Fall 2021 1ST Period

This course includes Orientation, Fire Service Communications, Firefighter Health & Safety, Personal Protective Equipment, Building Construction, Portable Extinguishers, Fire Behavior, Tools and Forcible Entry, and Loss Control.

• FIP 3032 FIRE FIGHTER TRAINING BLOCK 2: Spring 2022 1ST Period

This course includes Ladders, Ventilation, Ropes & Knots, Search & Rescue, Water Supplies, Hose, Streams, and Appliances, and Emergency Medical Care.

PREREQUISITES: FIP 3031 FIRE FIGHTER TRAINING BLOCK 1

Programs offered for Central Haywood High School students only:

• NUR 3240 NURSE AID I: Times Vary

Certified Nursing Assistants, CNA, are the caregivers who, for the most part, help patients of all ages perform the most basic day-to-day tasks. CNA’s work under the supervision of a nurse, and since they have extensive daily contact with each patient, they place a key role in keeping the nurse up-to-date on vital information about the patient’s conditions.

PREREQUISITES:

- Students must have reading test results at a 9th grade level or above.
- If under age 18, need a minor permission form filled out by the student, parent or guardian and principal.

Location of courses: Haywood Community College/Online

HAVE QUESTIONS?

High School Programs Coordinator
Jessica Honeycutt- jhoneycutt@haywood.edu | 828.565.4119

Connect with us!



185 Freedlander Drive | Clyde, NC 28721



CURRICULUM

Arts, Sciences, & Natural Resources and Transitional Studies

HCC-ASNR@haywood.edu

Associate in Arts
Associate in Engineering
Associate in General Education Nursing
Associate in Science
Fish & Wildlife Management Technology
Forest Management Technology

Business and Industry

HCC-BUSIND@haywood.edu

Accounting & Finance
Automotive Systems Technology
Business Administration
Collision Repair & Refinishing Technology
Computer-Integrated Machining Technology
Electrical Systems Technology
Electronics Engineering Technology
Industrial Systems Technology
Information Technology
Professional Crafts-Clay
Professional Crafts-Fiber
Professional Crafts-Jewelry
Professional Crafts-Wood
Small Business Center
Welding Technology

Health and Human Services

HCC-HHS@haywood.edu

Cosmetology
Criminal Justice Technology
Early Childhood Education
Medical Assisting
Medical Office Administration
Nursing
RN Completer Program

CONTINUING EDUCATION

Workforce Continuing Education

HCC-WCE@haywood.edu

Allied Health
Corporate & Community Education
Creative Arts
Emergency Services
Fire
Human Resource Development
Industry and Customized Training
Online Learning & Computer Training
Pharmacy Technician
Public Safety
Special Interests

SKILLS & HIGH SCHOOL

College and Career Readiness

HCC-CCR@haywood.edu

Adult Basic Skills
Adult High School
Basic Skills Plus
Career College
ESL (English as a Second Language)
High School Equivalency (Formerly GED)
Learning Support Services

High School Programs

HCC-CCP@haywood.edu

Career & College Promise
Haywood Early College



haywood.edu
828.627.4500

Haywood Community College is accredited by the Southern Association of Colleges and Schools Commission on Colleges to award certificate, diploma, and associate's degrees.

HCC is an equal opportunity institution and does not discriminate on the basis of race, religion, ethnicity, national origin, gender, gender identity, sex, age, disability, genetic information and veteran status.